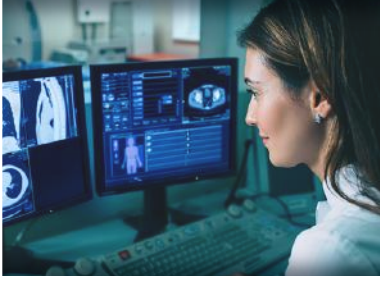


# COMMUNITY RADIOLOGIST

Brattleboro, VT

**OPTIMUM**  
Permanent Placement Services



## About the Location

This facility is part of a renowned health system including four affiliated hospitals, an NCI-designated cancer center, a children's hospital, and 30 ambulatory clinics across the region. Nestled in the Green Mountains of Southern Vermont, this quintessential New England town boasts a downtown packed with fun coffee shops, bookstores, and art galleries. The nearby mountains offer a picturesque playground for outdoor recreation. Enjoy scenic hikes, kayaking, fishing, boating, and skiing—Brattleboro even has its own annual ski jump competition!

## About the Opportunity

- Interpret the full range of modalities including plain films, ultrasound, MR, CT, and mammography
- Perform light interventional procedures including biopsies, drainages, and breast procedures
- Monday-Friday daytime schedule
- Opportunity to collaborate with subspecialty providers at academic medical center
- Compensation includes a \$20K relocation stipend, generous benefits and retirement contributions, along with dedicated CME time and funds

## Interested?

To learn more about this opportunity, please contact:  
Cory Woods at 603.816.9018 or [opportunities@optimumperm.com](mailto:opportunities@optimumperm.com)

